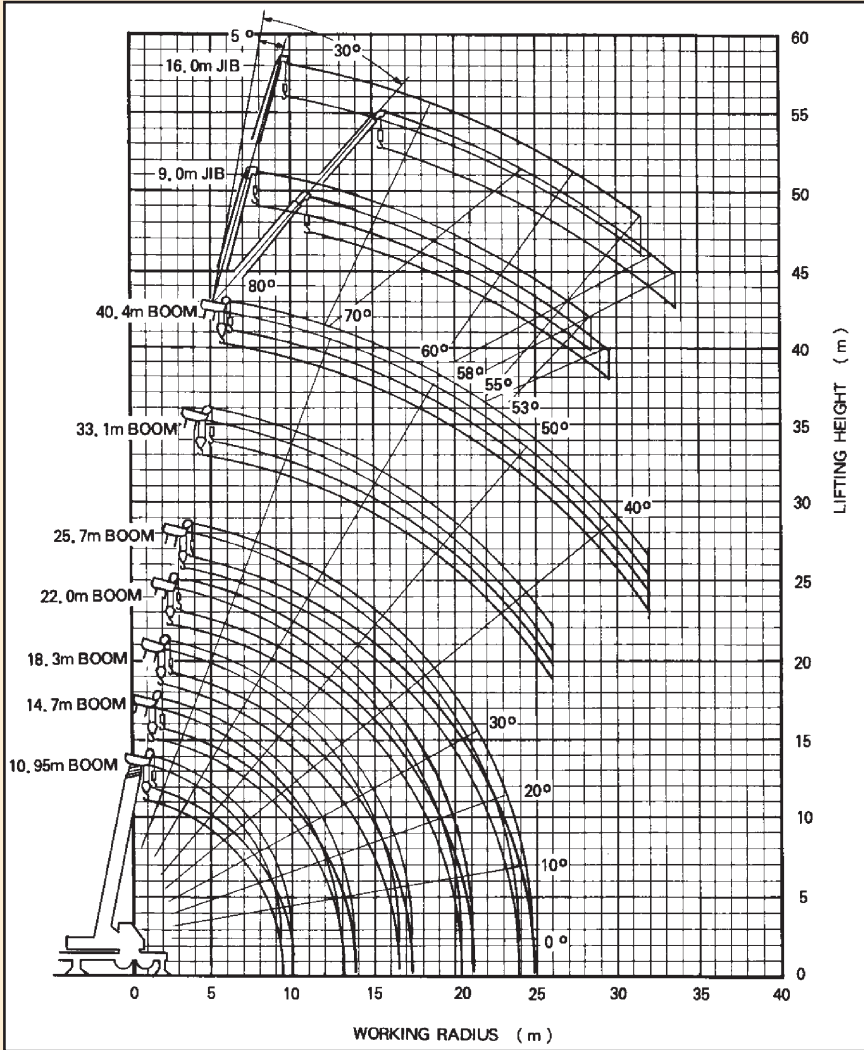


Taleswing 3.5 m Outriggers extended 6.600m Middle 4.600

Wm. O'BRIEN

DON'T RISK IT - LET O'BRIEN LIFT IT



WORKING RANGE



WHERE O'BRIEN GOES - PROSPERITY FOLLOWS

TOTAL RATED LOADS Din 15019.2-75%

Unit : kg

Outriggers fully extended + Front Jack extended (360°) Outriggers fully extended (Over sides and rear)																			
A B	10.95m	14.7m	18.3m	22.0m	25.7m	33.1m	40.4m	C E D			9.0m		16.0m						
								80°	79°	78°	77°	76°	75°	73°	5°	30°	5°	30°	
3.0m	50,000	33,000	28,000	24,000									3,500	2,000	3,500	2,000	2,000	950	
3.5m	43,000	33,000	28,000	24,000									3,500	2,000	3,500	2,000	2,000	940	
4.0m	38,000	33,000	28,000	24,000	20,000								3,500	1,960	3,500	2,000	2,000	920	
4.5m	34,000	30,500	28,000	24,000	20,000								3,300	1,910	3,300	2,000	2,000	910	
5.0m	30,200	29,000	28,000	23,300	20,000								3,120	1,860	3,120	1,920	1,920	890	
5.5m	27,500	26,500	25,600	21,500	19,200	13,000							2,970	1,820	2,970	1,850	1,850	880	
6.0m	25,000	24,000	23,500	20,000	17,700	13,000							2,680	1,730	2,680	1,710	1,710	850	
6.5m	22,700	22,300	21,800	18,700	16,500	13,000	7,500						2,330	1,580	2,330	1,530	1,530	810	
7.0m	20,700	20,300	20,000	17,600	15,400	13,000	7,500						2,150	1,490	2,150	1,400	1,400	790	
7.5m	18,700	18,600	18,500	16,500	14,400	13,000	7,500						1,910	1,360	1,910	1,230	1,230	760	
8.0m	17,300	17,100	17,000	15,600	13,500	12,200	7,500						1,750	1,290	1,750	1,140	1,140	730	
9.0m	13,500	13,400	13,400	13,300	12,000	10,800	7,500						1,250	1,100	1,250	980	980	700	
10.0m		10,900	10,900	10,800	10,700	9,700	7,300						950	850	950	750	750	600	
11.0m		9,000	9,000	8,950	8,900	8,700	6,800						600	500	600	450	450		
12.0m		7,500	7,500	7,450	7,400	7,900	6,300						55°	500	55°	400			
14.0m			5,300	5,250	5,200	6,000	5,500												
16.0m			3,700	3,650	3,600	4,550	4,700												
18.0m				2,500	2,500	3,400	3,900												
20.0m				1,650	1,650	2,500	3,050												
22.0m					950	1,800	2,350												
24.0m						1,250	1,750												
26.0m						800	1,300												
28.0m							900												
30.0m							600												
32.0m							300												

A: Boom length
 B: Working Radius
 C: Jib Length
 D: Jib Offset
 E: Boom angle



DON'T RISK IT - LET O'BRIEN LIFT IT