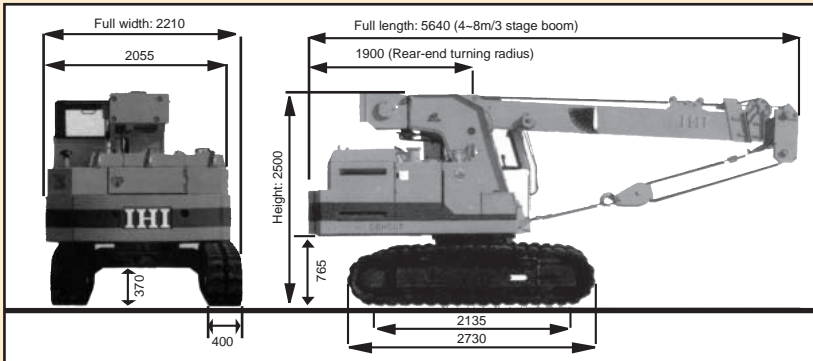
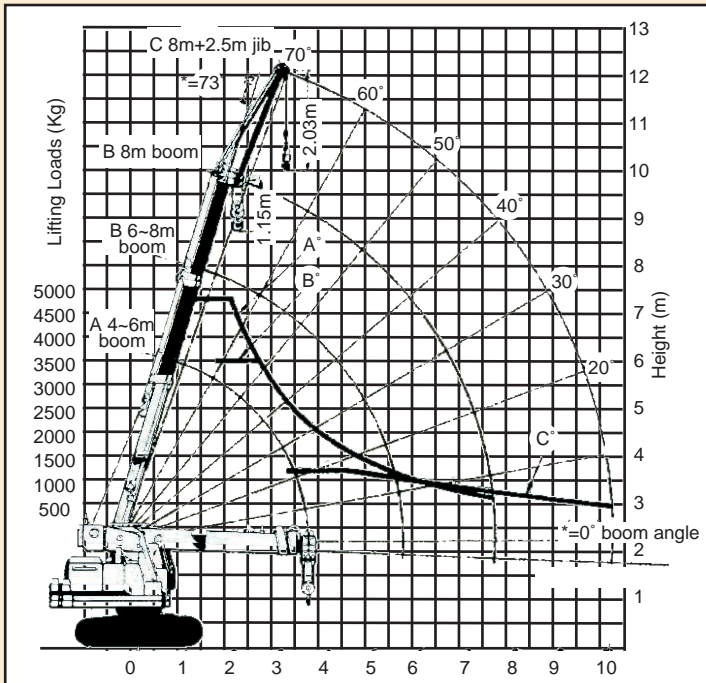


DIMENSIONS



WORKING RADIUS (4 ~ 8 m/3 stage boom + 2.5m jib) Lifting ~Loads



DON'T RISK IT - LET O'BRIEN LIFT IT

RATED LIFTING LOADS (4m ~ 8m main boom)

working radius (m)	Main Boom: 4m - 6m under		Main Boom: 6m over - 8m	
	Fixed Operation 360° A kg	Carrying Operation 360° (kg)	Fixed operation 360° (kg)	Carrying Operation 360° (kg)
2.0	4800	2000	3500	2000
2.2	4300	2000	3500	2000
2.5	3700	2000	3500	2000
2.6	3500	2000	3500	2000
3.0	2870	1640	2870	1640
3.5	2310	1320	2310	1320
4.0	1890	1080	1890	1080
4.5	1580	900	1580	900
5.0	1350	770	1350	770
5.5	1150	650	1150	650
6.0			960	540
6.5			800	450
7.0			690	390
7.5			580	330

RATED LIFTING LOADS (2.5m jib option)

Main Boom angle	73°	70°	60°	50°	40°	30°	20°	10°
All Direction/360° (kg)	1200	1200	1060	830	660	500	410	380

Wm. O'BRIEN

WHERE O'BRIEN GOES - PROSPERITY FOLLOWS



5 Ton IHI Crawler Crane with rubber tracks at work

Wm. O'BRIEN

DON'T RISK IT - LET O'BRIEN LIFT IT