

TOTAL RATED LOADS Din 15019.2-75%

Unit : kg

Outriggers fully extended + Front Jack extended (360°) Outriggers fully extended (Over sides and rear)										
A B	10.0m	13.5m	17.0m	20.5m	24.0m	27.5m	31.0m	C E D	8.0m	
									5°	30°
3.0m	25,000	17,500	14,500	9,500				80°	2,750	1,350
3.5m	20,600	17,500	14,500	9,500				75°	2,750	1,350
4.0m	18,000	17,500	14,500	9,500	7,500	6,500		70°	2,300	1,300
4.5m	16,300	15,800	14,500	9,500	7,500	6,500		65°	2,000	1,250
5.0m	14,850	14,400	13,250	9,500	7,500	6,500	6,000	60°	1,600	1,200
5.5m	13,650	13,250	12,200	9,500	7,500	6,500	6,000	55°	1,300	1,000
6.0m	12,300	12,200	11,300	9,500	7,500	6,500	6,000	50°	950	850
6.5m	11,200	11,000	10,500	9,500	7,500	6,500	6,000	45°	650	600
7.0m	10,250	10,000	9,800	8,850	7,500	6,500	6,000	40°	450	400
7.5m	9,400	9,200	9,100	8,350	7,500	6,500	6,000	35°	280	250
8.0m	8,650	8,450	8,350	7,900	7,050	6,200	5,650			
9.0m		7,200	7,100	7,000	6,350	5,600	5,050			
10.0m		6,200	6,100	6,400	5,750	5,100	4,600			
12.0m			4,250	4,600	4,700	4,300	3,900			
14.0m			3,050	3,400	3,550	3,650	3,350			
16.0m				2,500	2,700	2,800	2,850			
18.0m				1,850	2,050	2,150	2,300			
20.0m					1,550	1,650	1,800			
22.0m					1,150	1,250	1,400			
24.0m						0,950	1,050			
26.0m							0,800			
28.0m							0,550			
29.0m							0,450			

A: Boom length
B: Working Radius
C: Jib Length
D: Jib Offset
E: Boom angle

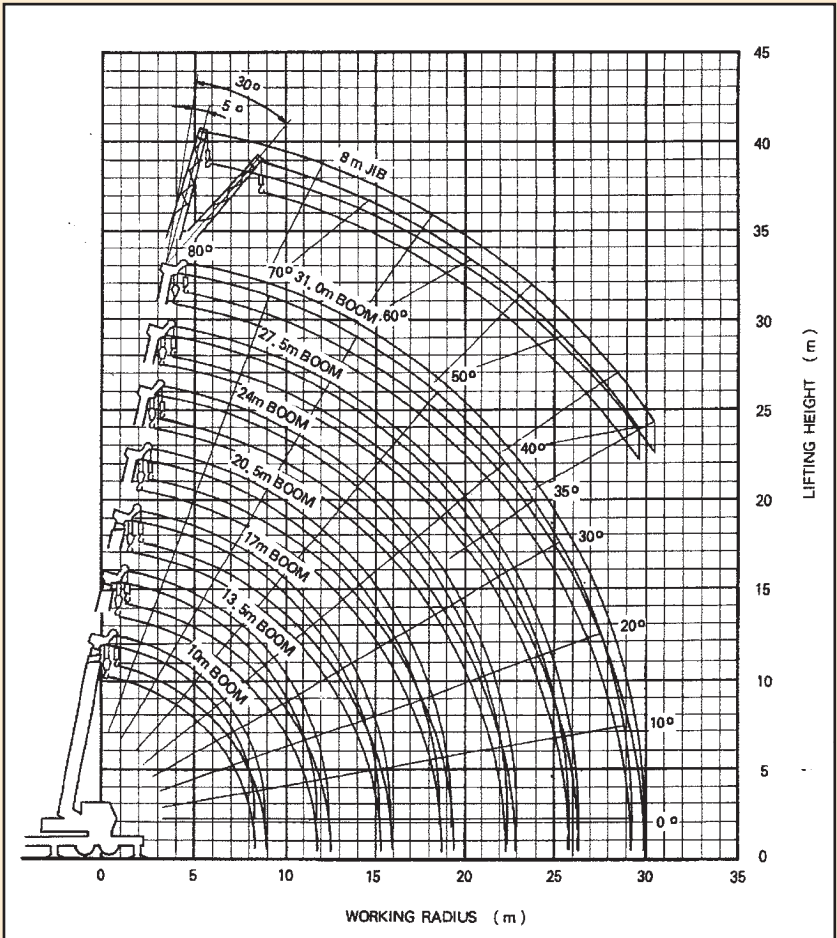
Unit : kg

Outriggers fully extended over front Outriggers extended to middle (360°)										
A B	10.0m	13.5m	17.0m	20.5m	24.0m	27.5m	31.0m	C E D	8.0m	
									5°	30°
3.0m	20,000	17,500	14,500	9,500				80°	2,750	1,350
3.5m	17,800	17,500	14,500	9,500				77°	2,750	1,350
4.0m	15,700	15,400	14,500	9,500	7,500	6,500		75°	2,100	1,350
4.5m	13,800	13,600	13,200	9,500	7,500	6,500		72°	1,400	1,200
5.0m	10,700	10,500	10,300	9,500	7,500	6,500	6,000	70°	1,100	,850
6.0m	7,100	6,900	6,700	7,200	7,200	6,500	6,000	68°	,850	,750
7.0m	5,000	4,900	4,700	5,200	5,300	5,300	5,200	65°	,550	,500
8.0m	3,800	3,700	3,500	3,900	4,100	4,100	4,050			
9.0m		2,700	2,600	2,900	3,100	3,200	3,250			
10.0m		2,100	2,000	2,300	2,500	2,650	2,650			
12.0m			1,000	1,300	1,500	1,650	1,700			
14.0m			,400	,700	,900	1,050	1,100			
16.0m					,450	,550	,650			

Wm. O'BRIEN

WHERE O'BRIEN GOES - PROSPERITY FOLLOWS

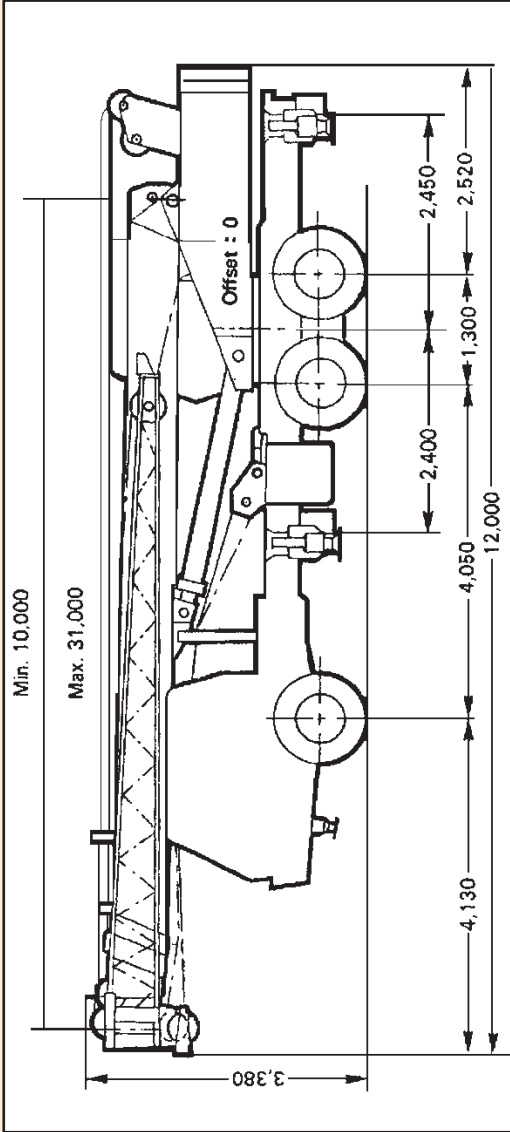
WORKING RADIUS - LIFTING HEIGHT



NOTE: The above lifting heights and boom angles are based on a straight (unladen) boom, and allowance should be made for boom deflection obtained under laden conditions

Wm. O'BRIEN

DON'T RISK IT - LET O'BRIEN LIFT IT



Tailswing 3.25m Outriggers Extended 6.100m Middle 4.000m



WHERE O'BRIEN GOES - PROSPERITY FOLLOWS



25 Ton Truck Mounted Crane.



City Crane at work in a height restricted area.



Wm. O'BRIEN

DON'T RISK IT - LET O'BRIEN LIFT IT